

# HENRY HUGGLEMONSTER

Meet The Hugglemonsters



## WINGS & HORN CRAFT

Make monster style wings and horns!

### HUGGLE HORNS

Create Henry's horns!

#### You Will Need:

1-8.5x11 stiff dark blue felt,  
1-8.5x11 stiff light blue felt,  
1-8.5x11 light yellow/green felt,  
Scissors, Non-toxic glue, Marker.

#### Directions:

Directions: Print out the following pages on 8.5x11 paper and have an adult help you cut out each piece. Draw an outline around the template onto the appropriate colors of felt, then cut out the felt pieces. Use non-toxic glue to attach pieces together to the front and back sides. Fold at the bottom and attach to head with a bobby pin, or make a small slice at the top of a stocking cap, put the bottom portion of the horns into the slice to secure and sew together.



### MONSTER WINGS

Make monster wings!

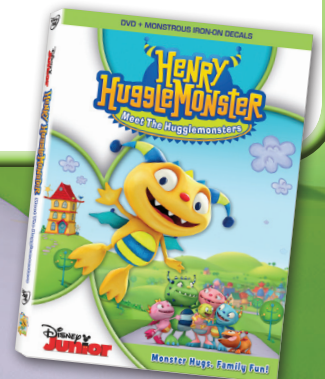
#### You Will Need:

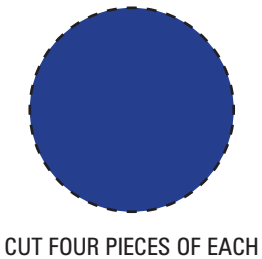
2-8.5x11 stiff teal felt, 1-8.5x11 stiff dark blue felt, Scissors,  
Non-toxic glue, 1-11x17 thick paper or cardboard. Marker.

**Directions:** Print out the following pages on 8.5x11 paper and have an adult help you cut out each piece. Draw an outline around the template onto thick paper or cardboard and also to the appropriate colors of felt. Use non-toxic glue to attach the felt to each side of the thick paper or cardboard. Attach to the back of your garment with safety pins, or have an adult help you carefully sew to a t-shirt or sweatshirt.

Print out the following pages!

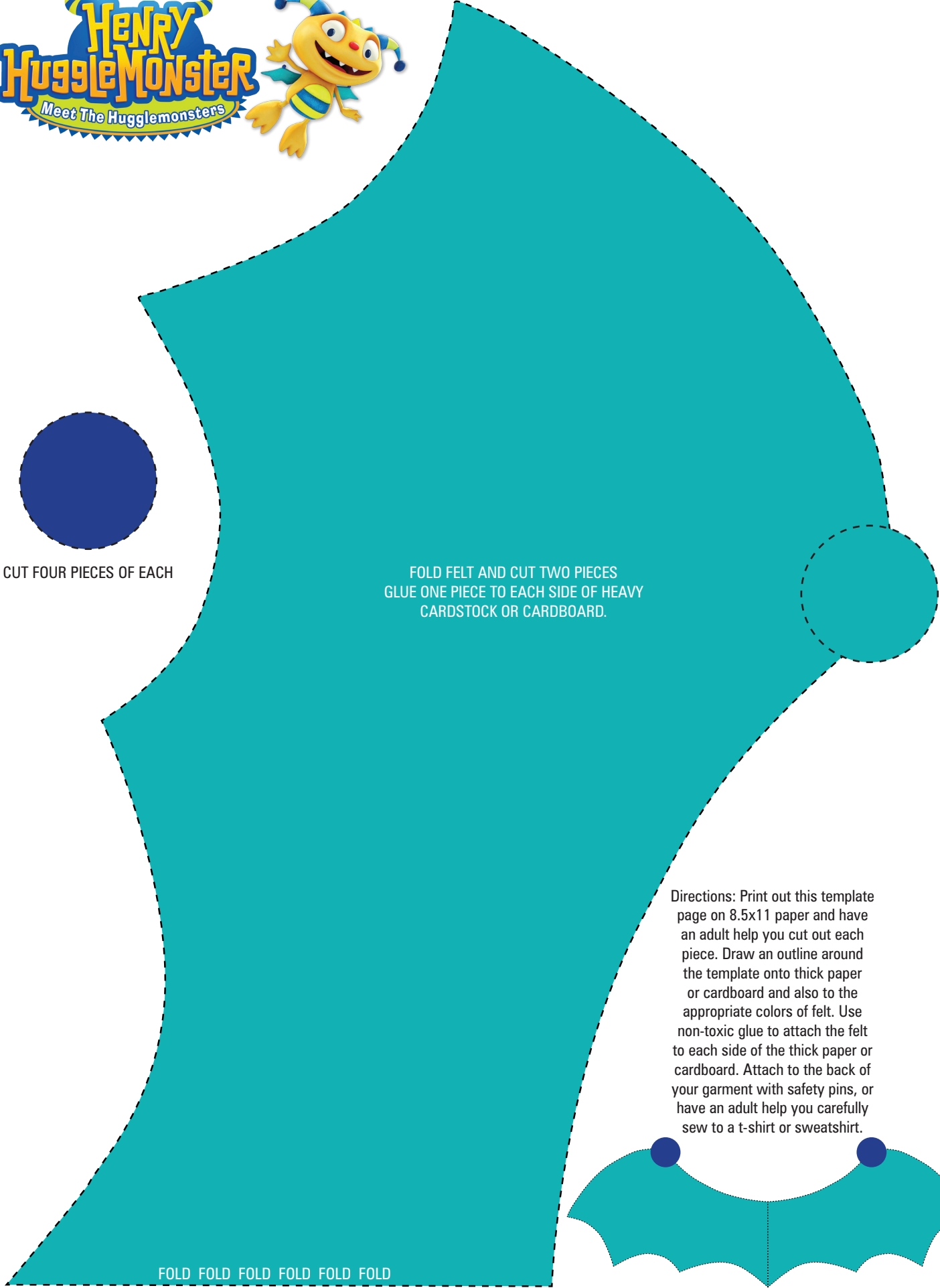
ON DVD  
JANUARY 14





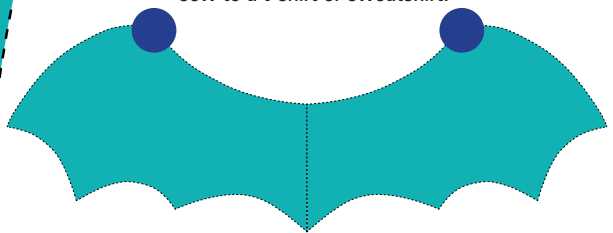
CUT FOUR PIECES OF EACH

FOLD FELT AND CUT TWO PIECES  
GLUE ONE PIECE TO EACH SIDE OF HEAVY  
CARDSTOCK OR CARDBOARD.



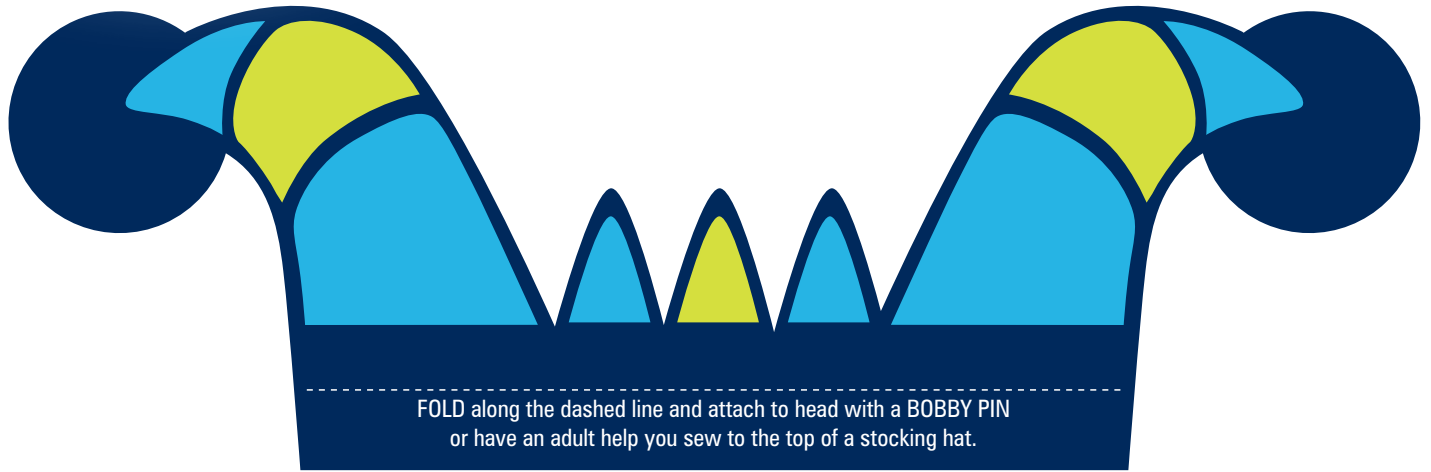
FOLD FOLD FOLD FOLD FOLD FOLD

Directions: Print out this template page on 8.5x11 paper and have an adult help you cut out each piece. Draw an outline around the template onto thick paper or cardboard and also to the appropriate colors of felt. Use non-toxic glue to attach the felt to each side of the thick paper or cardboard. Attach to the back of your garment with safety pins, or have an adult help you carefully sew to a t-shirt or sweatshirt.





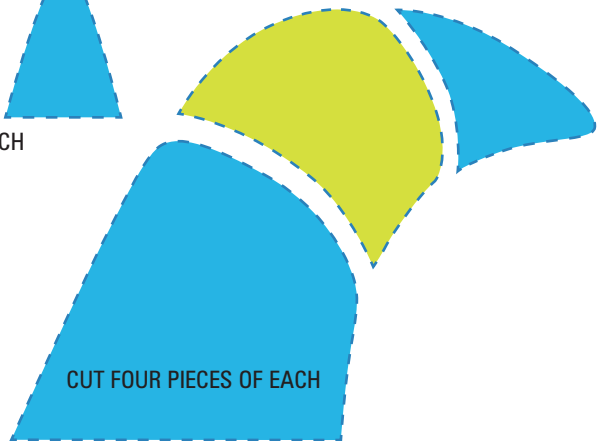
Directions: Print out this template page on 8.5x11 paper and have an adult help you cut out each piece. Draw an outline around the template onto the appropriate colors of felt, then cut out the felt pieces. Use non-toxic glue to attach pieces together to the front and back sides. Fold at the bottom and attach to head with a bobby pin, or make a small slice at the top of a stocking cap, put the bottom portion of the horns into the slice to secure and sew together.



FOLD along the dashed line and attach to head with a BOBBY PIN or have an adult help you sew to the top of a stocking hat.



CUT TWO PIECES OF EACH



CUT FOUR PIECES OF EACH



FOLD FELT AND CUT ONE PIECE

FOLD FOLD FOLD FOLD FOLD FOLD FOLD FOLD FOLD FOLD