



YOUR DINO PUPPET BOX



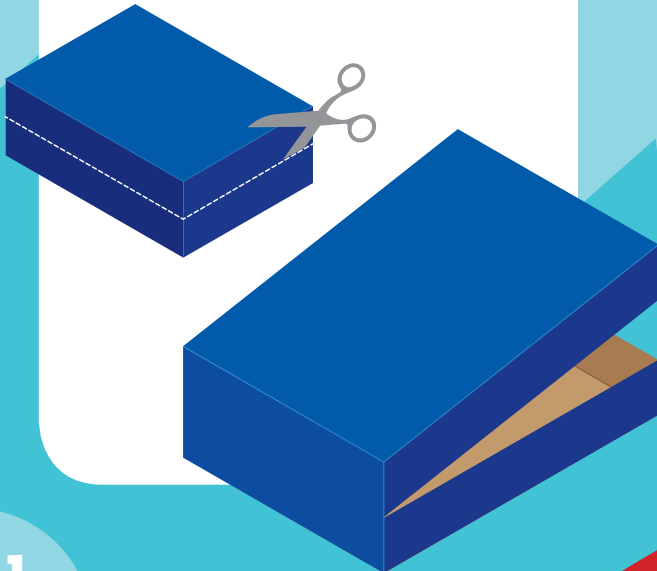
YOU'LL NEED:

- 1 empty macaroni cardboard box
- 1 sheet of thick white paper
- Sharp scissors
- Glue
- Paint and paintbrush

ASK AN ADULT TO HELP YOU

STEP 1

Ask an adult to **cut along the middle of the box** on three sides, leaving one side uncut.



STEP 2

Make two holes for your fingers on the uncut side. After inserting them, you should now be able to **open and close** the box like a mouth.



1

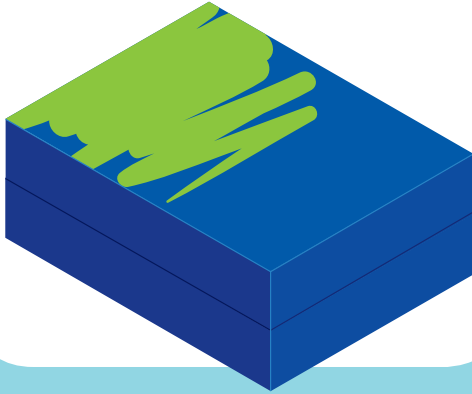
Disney · PIXAR
**THE GOOD
DINOSAUR**

ON BLU-RAY™, DIGITAL HD & Disney Movies Anywhere
FEBRUARY 23



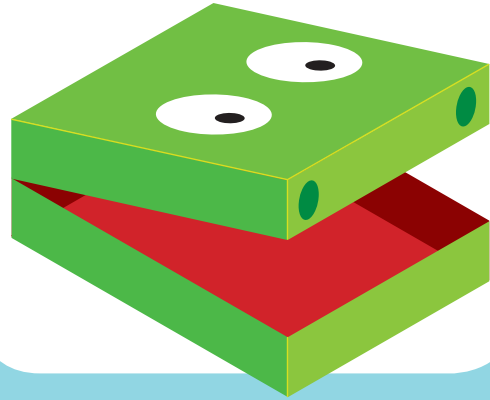
STEP 3

Paint the box the color you prefer. The box will need two coats of paint to cover the product information. Let it dry.



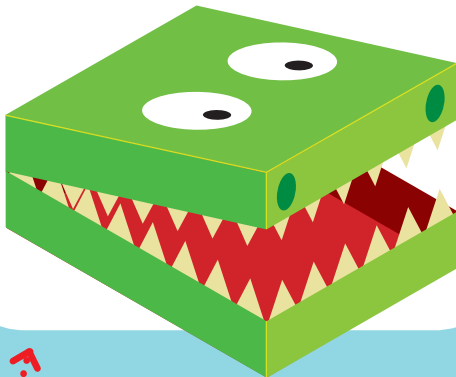
STEP 4

Next, color the inside of the mouth. Let it dry. Paint eyes and nostrils as well.



STEP 5

Once the box is dry, cut many triangular teeth out of the thick white paper and glue them to the box from the inside.



NOW LET YOUR HAND ROAR LIKE A SCARY DINOSAUR!

TIP
Don't make the teeth too big or they will bend when you close the box!



2

Disney · PIXAR
THE GOOD DINOSAUR

ON BLU-RAY™, DIGITAL HD & Disney Movies Anywhere
FEBRUARY 23

