



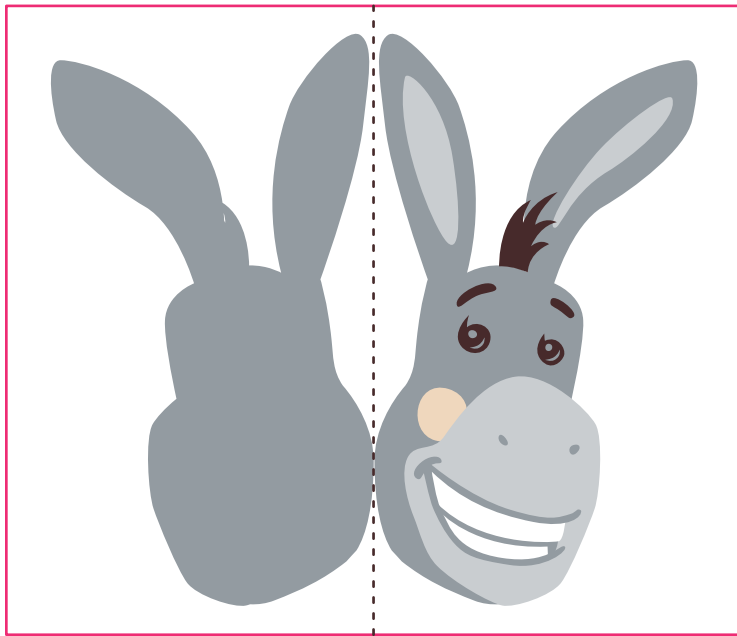
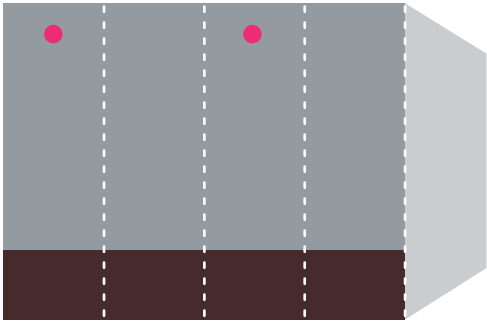
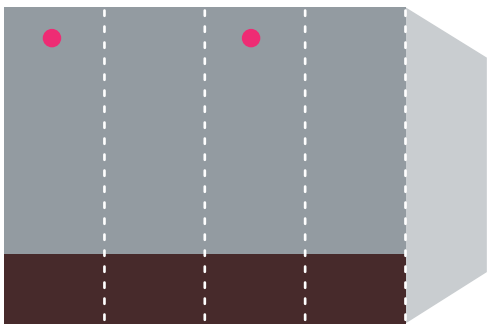
MATERIALS:

- Metal-edged ruler
- Butter knife
- Scissors or X-ACTO knife
- Cutting mat (optional)
- Multipurpose glue

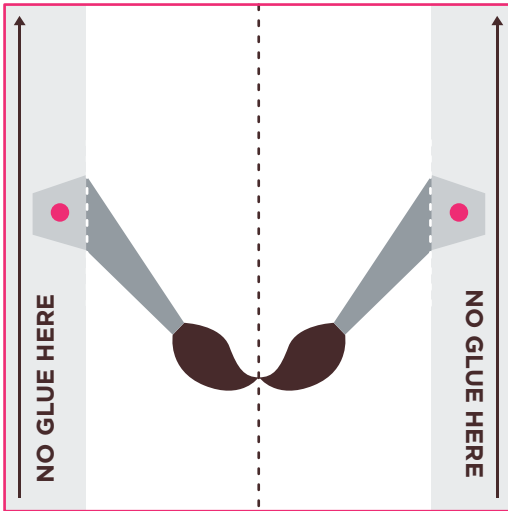
3-D Donkey Assembly Instructions

<p>01. Score all the pieces. Using a ruler as a guide, run the back side of a butter knife firmly along all the dotted lines.</p>	<p>02. Using scissors or an X-ACTO knife and cutting mat, cut out all the pieces along the outer edges, being sure to only cut out boxes around the face and tail. Also, remember to cut the slit on the side piece.</p>
<p>03. Fold the face and tail pieces down the center dotted line and glue together. On the tail, make sure to pay attention to where NOT to apply glue. Once dry, cut out each piece along the outer edge.</p>	<p>04. Fold the side panel on all the dotted lines. Place the tail through the cut out slit and glue the tabs to the inside of the side panel piece.</p>
<p>05. Glue the side panel to the back side of Donkey's body. Allow glue to dry completely. Repeat with back side on remaining tabs.</p>	<p>06. Assemble Donkey's legs by folding on all the dotted lines and glue the tab on each leg to the back of the piece. Then place glue on the pink dot guides and place in between the two body panels. Allow to dry completely.</p>
<p>07. Glue Donkey's head to the top of the front side panel, where it is labeled.</p>	<p>08. Done!</p>





FACE: CUT OUT RECTANGLE, FOLD ON DOTTED LINE, GLUE TOGETHER.



TAIL:

CUT OUT SQUARE,
FOLD ON CENTER DOTTED LINE,
AND GLUE TOGETHER.

DO NOT GLUE IN
THE GREY AREA

