



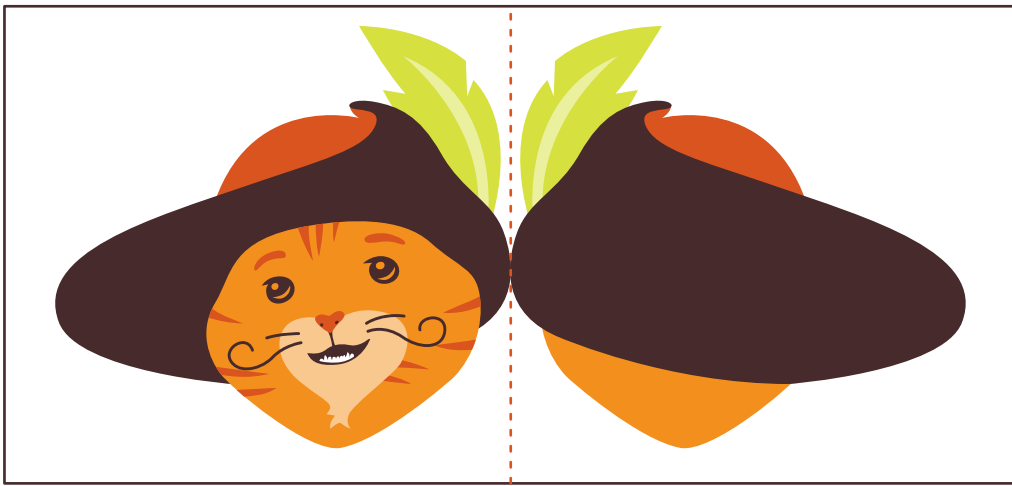
**MATERIALS:**

- Metal-edged ruler
- Butter knife
- Scissors or X-ACTO knife
- Cutting mat (optional)
- Multipurpose glue

## 3-D Puss in Boots Assembly Instructions

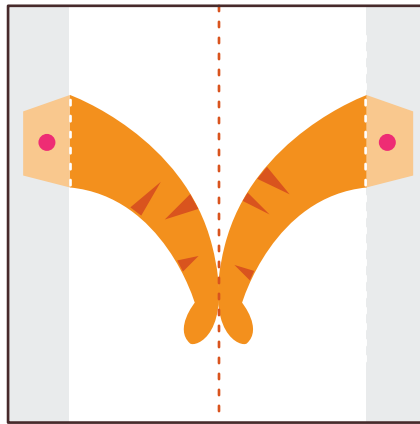
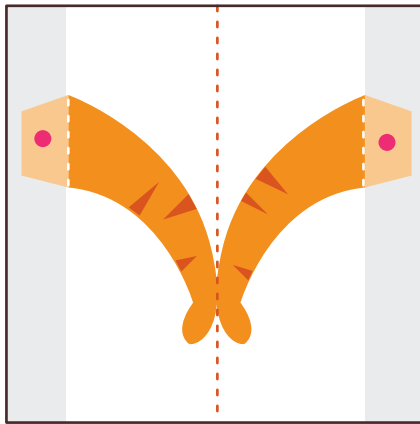
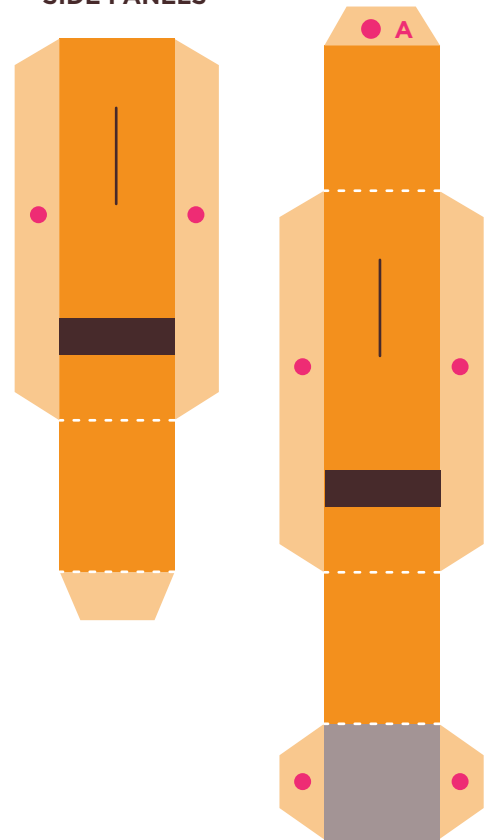
<p>01. Score all the pieces. Using a ruler as a guide, run the back side of a butter knife firmly along all the dotted lines.</p>	<p>02. Using scissors or an X-ACTO knife and cutting mat, cut out all the pieces along the outer edges, being sure to only cut out boxes around the face and arms. Also, remember to cut the slit on the side panel pieces.</p>
<p>03. Fold the face and arm pieces down the center dotted line and glue together. On the arms, make sure to pay attention to where NOT to apply glue. Once dry, cut out each piece along the outer edge.</p>	<p>04. On both side panels, fold on all the dotted lines. Place each arm through the cut out slits on the side panels and glue the tabs to the inside of the side panel piece.</p>
<p>05. Glue tab A on the side panel to the back of the other side panel (on the side nearest the arm). Glue the tabs to the back side of Puss' body. Allow to dry, then repeat and glue the other body panel to the remaining tabs.</p>	<p>06. Assemble the cape by folding on the dotted lines. Apply glue on the pink dot and fold the other side of the cape over the glue. Allow to dry completely and place the cape over the body.</p>
<p>07. Assemble the boots by folding on the dotted lines and gluing the tabs behind the individual pieces. Glue the brown part of the piece to the bottom of the Puss' body.</p>	<p>08. Glue Puss' head to the top of the front side panel, where it is labeled.</p>
<p>09. Done!</p>	



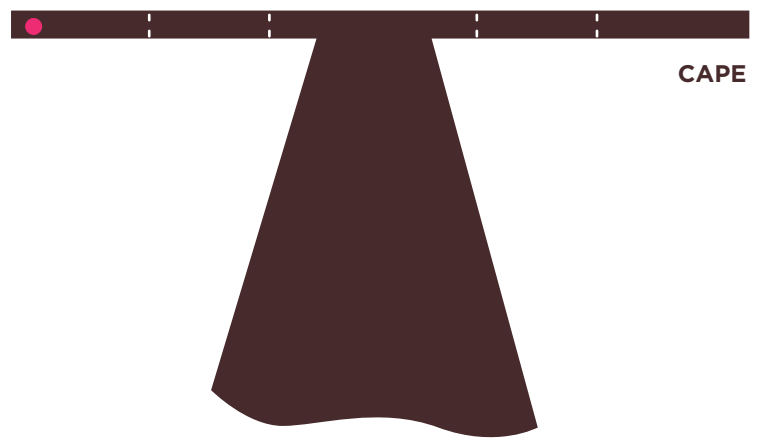


FACE: CUT OUT RECTANGLE, FOLD ON DOTTED LINE, GLUE TOGETHER.

SIDE PANELS



ARMS: CUT OUT SQUARE, FOLD ON CENTER DOTTED LINE, GLUE TOGETHER. DO NOT GLUE IN THE GREY AREA.



BOOTS

