



MATERIALS:

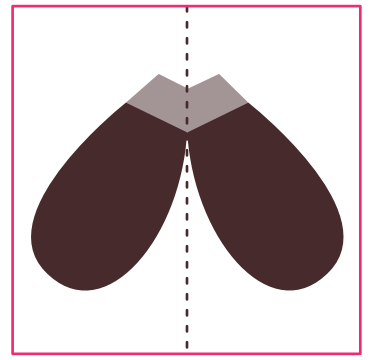
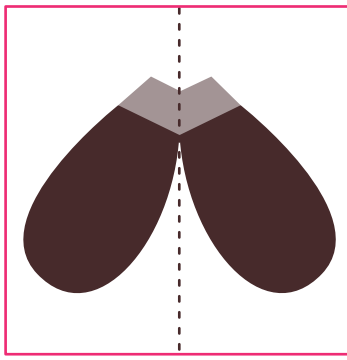
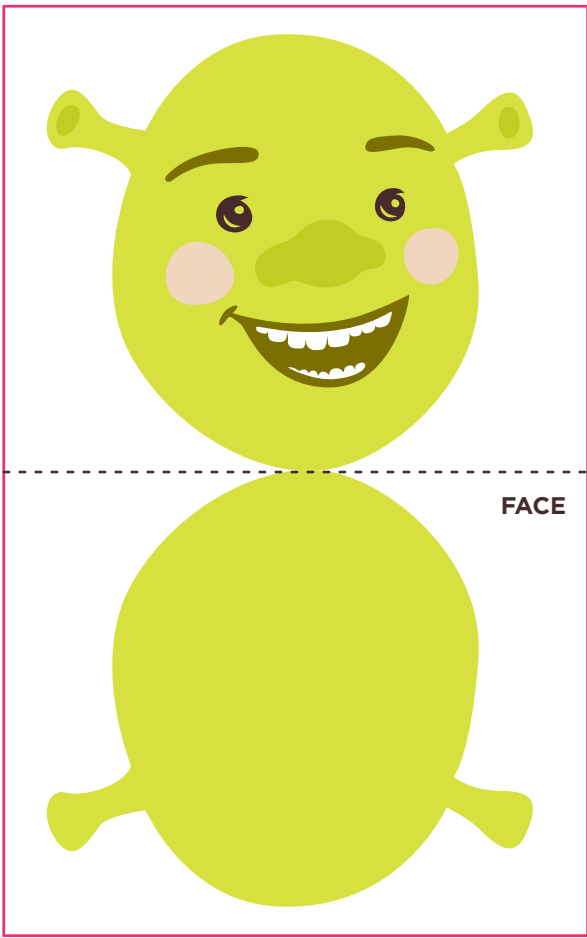
- Metal-edged ruler
- Butter knife
- Scissors or X-ACTO knife
- Cutting mat (optional)
- Multipurpose glue

3-D Shrek

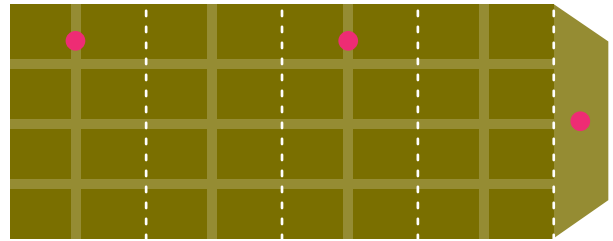
Assembly Instructions

<p>01. Score all the pieces. Using a ruler as a guide, run the back side of a butter knife firmly along all the dotted lines.</p>	<p>02. Using scissors or an X-ACTO knife and cutting mat, cut out all the pieces along the outer edges, being sure to only cut out boxes around the face and feet.</p>
<p>03. Fold the face and feet pieces down the center dotted line and glue together. Once dry, cut out each piece along the outer edge.</p>	<p>04. On the outer side panels and inner side panels, fold on all the dotted lines. Glue the inner side panels to the backside of Shrek's body, using the pink dots as a guide on where to apply glue. Allow to dry completely.</p>
<p>05. Glue tab A under the outer side panel. Then glue the outer side panels to the backside of Shrek's body, using the pink dots as a guide on where to apply glue. Allow to dry completely.</p>	<p>06. Glue the front of Shrek's body onto the remaining side panel tabs.</p>
<p>07. Assemble Shrek's legs by folding on all the dotted lines and glue the tab on each leg to the back of the piece. Then place glue on the pink dot guides and place in between the two body panels. Allow to dry completely.</p>	<p>08. Glue tab on foot to inside of Shrek's leg. Fold foot upward and repeat with other foot.</p>
<p>09. Glue Shrek's head to the top of the front side panel, where it is labeled.</p>	<p>10. Done!</p>

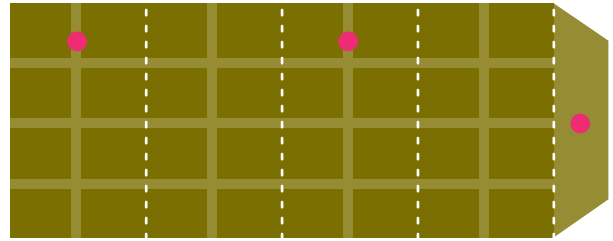




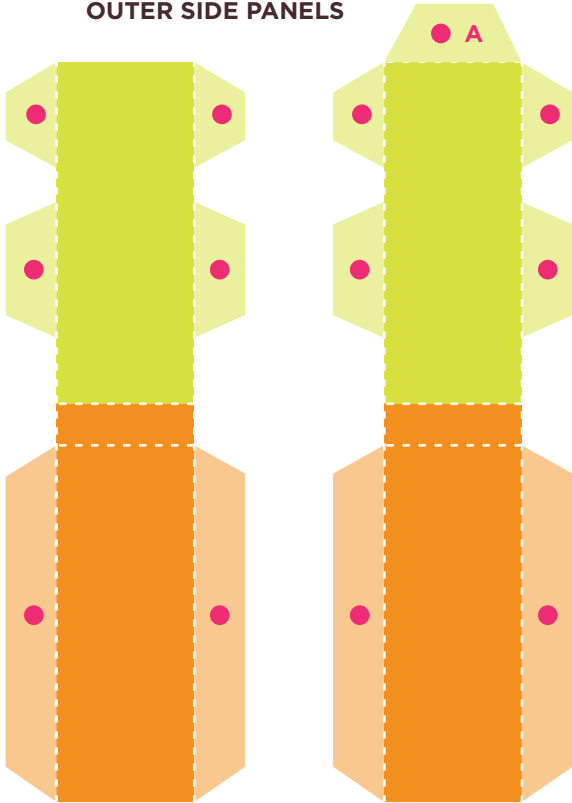
FEET



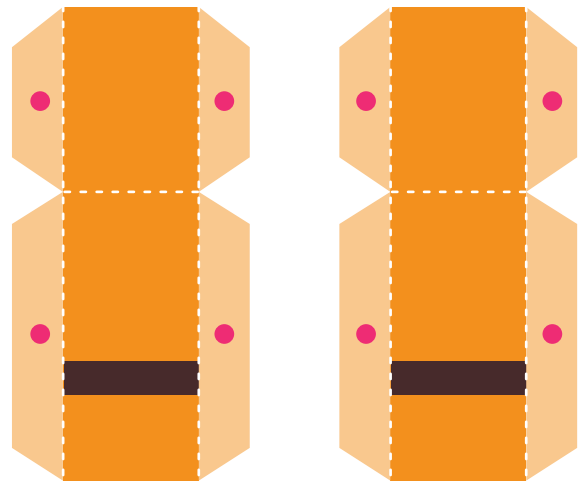
LEGS



OUTER SIDE PANELS



INNER SIDE PANELS





FRONT



BACK

